

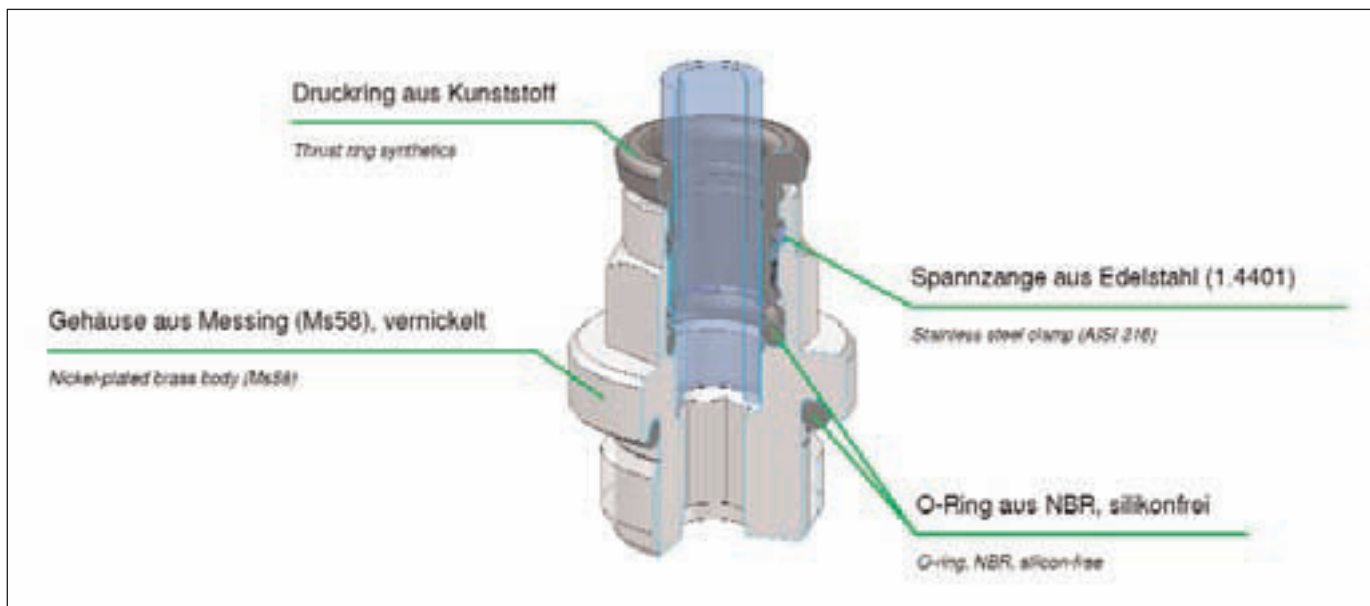
## vtso – Nástrčné koncovky

## vtso – Push-in fittings



### Funkcie

- ▶ **Nástrčný systém s elastickými nerezovým svorkami**
- ▶ **Montáž trubiek na jeden pohyb**
- ▶ **Pre trúbky z rôznych materiálov (PU, PA)**
- ▶ **Malý rozmer a nízka hmotnosť**
- ▶ **Bez silikónové O krúžky**
- ▶ **Tesniaci O krúžok pre drsné povrchy**
- ▶ **Štandardná, flexibilná štruktúra**
- ▶ **Šesťhranný koniec pre ľahkú montáž**
- ▶ **Push-in system with stainless steel elastic clamp**
- ▶ **Tube assembly with one movement**
- ▶ **For tubes in various materials (PU, PA)**
- ▶ **Small-scale and low weight**
- ▶ **Silicon-free O-rings**
- ▶ **O-ring in sealing channel – for rough surfaces**
- ▶ **Modular, flexible structure**
- ▶ **Hexagon socket for easy assembly**



## Technické údaje Technical data

Pracovní teplota	-20°C až +70°C -20°C až +80°C	Pre koncovky s PVC tesnením Pre koncovky s NBR O krúžkom Záleží od rozsahu tlaku použite trúbky
Pracovní tlak	až 16bar	
Vákuum	max 98%	
Materiály	Mosadzné telo (Ms58) pozinkované Bez silikonové NBR tesnenie Nerezové svorky 1.4401 Čierny plastový krúžok	
Závit	Valcový závit DIN EN ISO 228 Kuželový závit DIN EN 10226 (DIN 2999) Metrický závit DIN ISO 261	Valcový s O krúžkom
Médium	Mazací a nemazací stlačený vzduch	Médium, ktoré je kompatibilné s materiálom komponentov
Hadica	Pre trúbky podľa normy ISO 14743 Tolerancia pre vonkajšie-Ø 4 až 8: ±0,1 Tolerancia pre vonkajšie-Ø 10 až 14: ±0,15 (PU) 10 až 14: ±0,1 (PA)	Odporúčané materiály: PU, PA
Operating temperature	-20°C to +70°C -20°C to +80°C	For fittings with PVC seal For fittings with NBR O-rings
Operating pressure	Up to 16 bar	Dependent on the pressure range of the tube used
Vacuum	max 98%	
Materials	Brass housing (Ms58), nickel-plated Silicon-free NBR seals Stainless steel clamp 1.4401 Black plastic thrust ring	
Thread	Cyl. thread, DIN EN ISO 228 Con. thread, DIN EN 10226 (DIN 2999) Metr. thread, DIN ISO 261	Cylindrical with O-ring seal
Medium	Lubricated and non-lubricated compressed air	Mediums which are compatible with the component materials
Tubes	For tubes in line with ISO 14743 Tolerances for external Ø 4 to 8: ±0.1 Tolerances for external Ø 10 to 14: ±0.15 (PU) 10 to 14: ±0.1 (PA)	Recommended materials, PU, PA

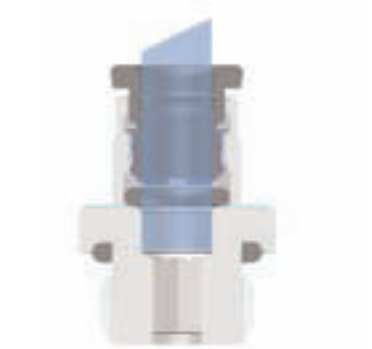
## Montážna inštrukcia pre nástrčné koncovky

### Assembling instructions for push-in fittings



- Pre dosiahnutie ideálneho tesnenia, trúbka by nemala byť odseknuta šikmo, preto odseknite trúbku kolmo. Uistite sa, že na trúbke nie sú nerovnosti.
- Zatlačte trúbku do koncovky, kým sa nezastaví.

- Cut the tube square. To ensure an ideal sealing the tube should not be oval.
- Make sure that the tube is free of burrs.
- Push tube into fitting till it stops.



- Zatlačte trúbku do koncovky, kým sa nezastaví.
- Vyskúšajte stabilitu krátky potiahnutím späť

- Push tube into fitting till it stops.
- Test stability by pulling tube shortly.

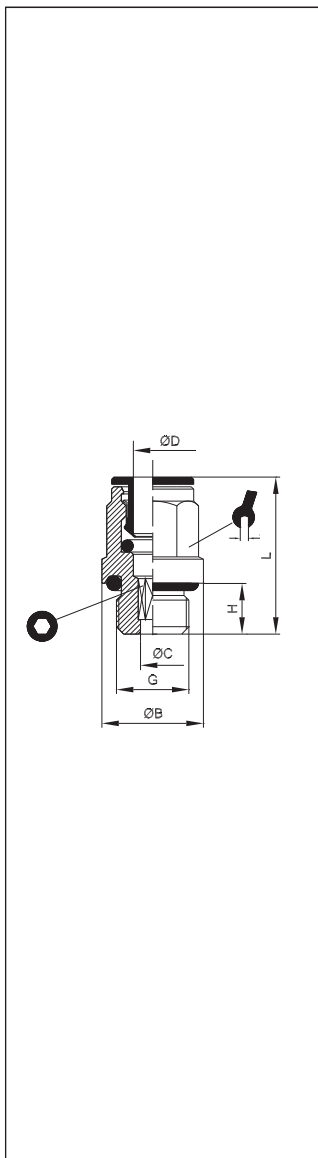


- Pre uvoľnenie trúbky zatlačte poistný krúžok
- Jemným pootáčaním vyťahujte trúbku

Pre ďalšiu montáž, znova odseknite koniec trubky. Potom zatlačenie a vyťahovanie trúbky by nemalo byť ťažké.

- Push thrust ring to release the tube.
- Pull out tube with slight rotation.

For anew assembling cut tube plain again. Then pushing and releasing the tube should not be affected adversely.

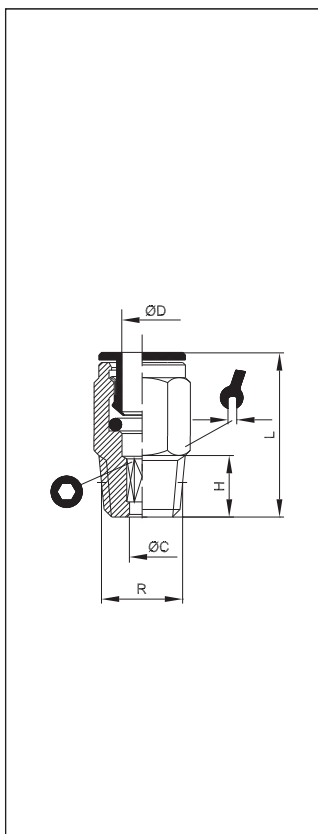


## vtso 01

### Priama spojka šrubovacia

Straight male adaptor (parallel)

VT	ØD	G	ØB	ØC	H	L			
200125	3	M3	5,5	1,6	3	13,5	Ø5,5	1,5	50
200124	3	M5	8	2,1	4	15	Ø6,5	2,0	50
200101	4	M5	9	2,6	4	20,5	Ø9	2,5	50
200122	4	M6	9	2,6	7	23,5	Ø9	2,5	50
200121	4	M7	10,5	3,6	6	22,5	9	3,5	50
200127	4	M8	12	2,6	7	24,5	10	2,5	50
200102	4	G <sup>1/8</sup>	13,5	2,6	6	20	9	2,5	50
200103	4	G <sup>1/4</sup>	17	2,6	8	21	9	2,5	50
200104	5	M5	9,5	2,6	4	22	Ø9,5	2,5	50
200105	5	G <sup>1/8</sup>	13,5	4,2	6	22	10	4	50
200106	5	G <sup>1/4</sup>	17	4,2	8	22	10	4	50
200100	6	M5	10,5	2,6	4	22,5	Ø10,5	2,5	50
200128	6	M6	11	2,6	4	22,5	Ø11	2,5	50
200120	6	M7	10,5	3,6	6	24,5	Ø10,5	3,5	50
200107	6	G <sup>1/8</sup>	13,5	4,2	6	24	11	4	50
200108	6	G <sup>1/4</sup>	17	4,2	8	24	11	4	50
200118	6	G <sup>3/8</sup>	20	4,2	9	25	13	4	50
200109	8	G <sup>1/8</sup>	12,8	5,2	6	26,5	13	5	50
200110	8	G <sup>1/4</sup>	17	6,2	8	25	13	6	50
200111	8	G <sup>3/8</sup>	20	6,2	9	25	13	6	50
200133	8	G <sup>1/2</sup>	23	6,2	11	31,5	13	6	25
200129	10	G <sup>1/8</sup>	13,5	5,2	6	29	16	5	50
200112	10	G <sup>1/4</sup>	16	7,3	8	29	16	7	50
200113	10	G <sup>3/8</sup>	21	8,3	9	29,5	16	8	50
200135	10	G <sup>1/2</sup>	24	8,3	11	31	16	8	25
200119	12	G <sup>1/4</sup>	16	7,3	8	31,5	18	7	50
200114	12	G <sup>3/8</sup>	21	10,3	9	31	18	10	25
200115	12	G <sup>1/2</sup>	24	10,3	11	31,5	18	10	25
200116	14	G <sup>3/8</sup>	21	10,3	9	34	21	10	25
200117	14	G <sup>1/2</sup>	25	12,3	11	34,5	21	12	25



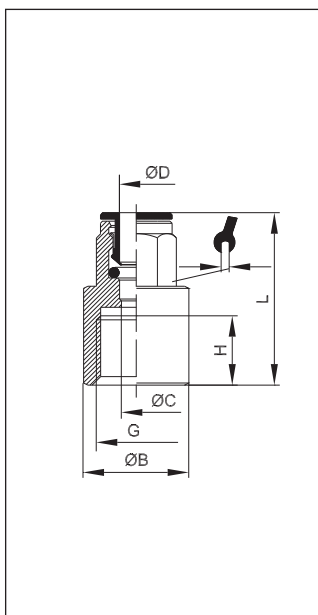
## vtso 01K

### Priama spojka šrubovacia (kuž. závit)

Straight male adaptor (con)

fluid division  
VT-HADICE & PLAST

VT	ØD	R	ØC	H	L			
200141	4	M6	2,6	8	23,5	9	2,5	50
200142	4	M8	3	8	23,5	10	-	50
200143	4	M10	2,6	8	24,5	11	2,5	50
200152	4	R <sup>1/8</sup>	2,6	7	22,5	10	2,5	50
200153	4	R <sup>1/4</sup>	2,6	11	22,5	14	2,5	50
200144	6	M6	2,6	6	23,5	11	-	50
200154	6	R <sup>1/8</sup>	4,2	7	24,5	11	4	50
200155	6	R <sup>1/4</sup>	4,2	11	24,5	14	4	50
200156	8	R <sup>1/8</sup>	5,2	7	27,5	13	5	50
200157	8	R <sup>1/4</sup>	5,2	11	27,5	13	5	50
200158	8	R <sup>3/8</sup>	5,2	11,5	28,0	17	5	25
200159	10	R <sup>1/4</sup>	7,3	11	32,5	16	7	25
200160	10	R <sup>3/8</sup>	8,3	11,5	32,5	17	8	25

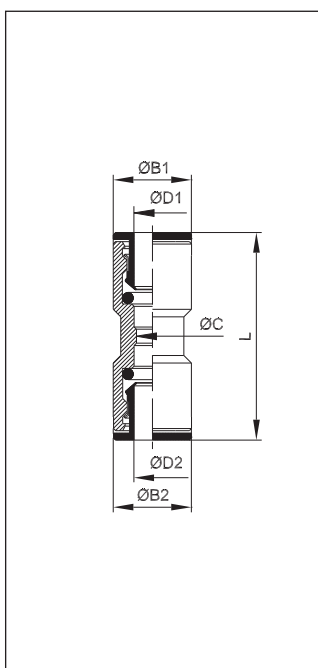


## vtso 02

### Priama spojka šrubovacia

Straight female adaptor

VT	ØD	G	ØB	ØC	H	L	■	■
200200	4	M5	SW9	3	5	21,5	9	50
200201	4	G <sup>1</sup> / <sub>8</sub>	12	3	6,5	26,5	9	50
200202	4	G <sup>1</sup> / <sub>4</sub>	17	3	10	29,5	9	50
200203	5	G <sup>1</sup> / <sub>8</sub>	12	4	6,5	27	10	50
200204	5	G <sup>1</sup> / <sub>4</sub>	16	4	10	30	10	50
200205	6	G <sup>1</sup> / <sub>8</sub>	12	5	6,5	27	11	50
200206	6	G <sup>1</sup> / <sub>4</sub>	17	5	10	31	11	50
200207	8	G <sup>1</sup> / <sub>8</sub>	12	7	6,5	28	13	50
200208	8	G <sup>1</sup> / <sub>4</sub>	17	7	10	32	13	50
200209	10	G <sup>1</sup> / <sub>4</sub>	16	9	10	32	16	50
200210	10	G <sup>3</sup> / <sub>8</sub>	20	9	13	38	20	25

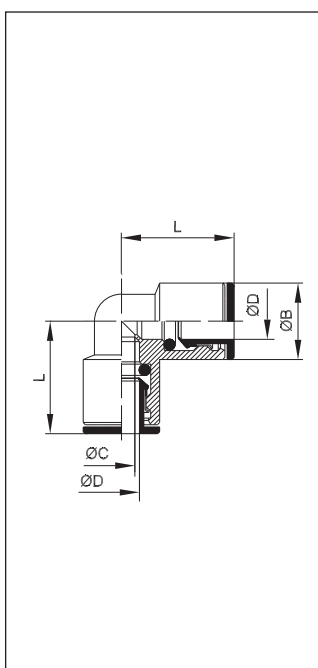


## vtso 03

### Priama spojka

Straight connector

VT	ØD1	ØD2	ØB1	ØB2	ØC	L	■
200300	3	3	6,5	6,5	2	21	50
200301	4	4	9	9	3	31	50
200302	5	5	9,5	9,5	4	33	50
200303	6	6	11	11	5	33	50
200304	8	8	13	13	7	37	50
200305	10	10	15	15	9	39	50
200306	12	12	17	17	11	43	50
200307	14	14	20	20	12	47,5	50
<b>Redukovaná / reduced</b>							
200308	6	4	11	9	3	33	50
200309	8	6	13	11	5	39	50
200310	10	8	16	13	7	39,5	50
200311	12	10	20	15	9	41,5	50
200312	14	12	22	17	11	45,5	50



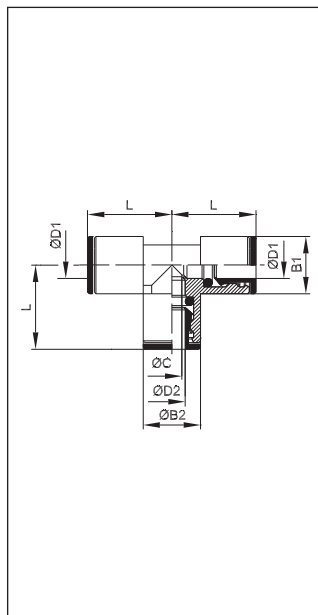
## vtso 04

### L - spojka

Elbow connector

VT	ØD	ØB	ØC	L	■
200400	3	7	-	11	50
200401	4	9	3	17,5	50
200402	5	9,5	4	19	50
200403	6	11	5	20	50
200404	8	13	7	23	50
200405	10	15	8	25	50
200406	12	17	10	27,5	50
200407	14	20	12	31	25

fluid division  
VT-HADICE & PLAST

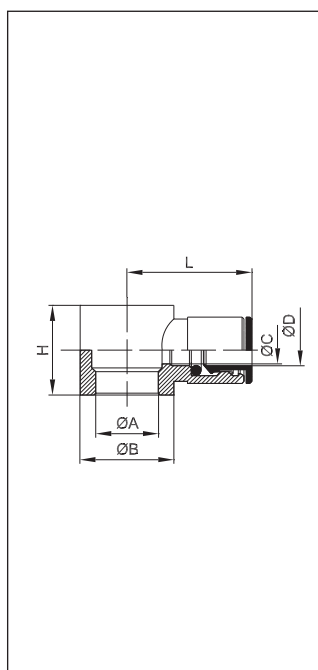


## vtso 05

### T-spojka

T-connector

VT	ØD1	ØD2	ØB1	ØB2	ØC	L	■
200500	3	3	7	7	-	13	50
200501	4	4	9	9	3	17	50
200502	5	5	9,5	9,5	4	19	50
200503	6	6	11	11	5	19,5	50
200504	8	8	13	13	7	23	50
200505	10	10	15	15	8	25	20
200506	12	12	17	17	10	27	20
200507	14	14	20	20	12	31	20
Redukovaná							
200508	6	4	11	9	3	19,5	50
200509	8	6	13	11	5	23	50
200510	10	8	15	13	7	25	20

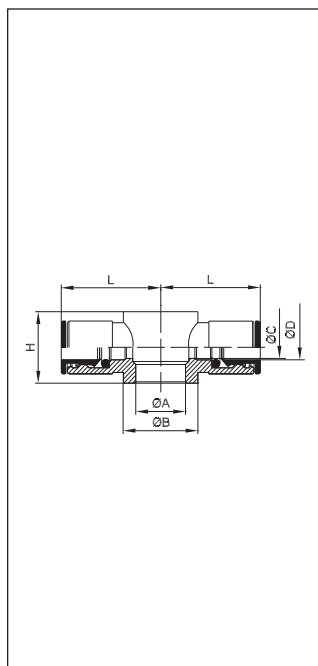


## vtso 013

### Prietokové oko

Single banjo body

VT	ØD	G	ØA	ØB	ØC	H	L	■
201200	3	M3	3,6	SW6,5	2	6,5	12,5	50
201201	4	M5	5	SW9	3	9	18	50
201215	4	M6	6	SW9	3	9	19	50
201202	4	G <sup>1</sup> / <sub>8</sub>	9,9	14	3	15	20,5	50
201203	5	M5	5	SW9	3,5	9	19	50
201204	5	G <sup>1</sup> / <sub>8</sub>	9,9	14	3,5	15	22,5	50
201213	6	M5	5,1	SW9	5	10,5	19,5	50
201205	6	G <sup>1</sup> / <sub>8</sub>	9,9	14	5	15	23	50
201206	6	G <sup>1</sup> / <sub>4</sub>	13,3	18	5	17	24	50
201207	8	G <sup>1</sup> / <sub>8</sub>	9,9	14	6	15	24,5	50
201208	8	G <sup>1</sup> / <sub>4</sub>	13,3	18	7	17	26	50
201209	8	G <sup>3</sup> / <sub>8</sub>	16,6	21	7	20	27	50
201210	10	G <sup>1</sup> / <sub>4</sub>	13,3	18	9	17	27	50
201211	10	G <sup>3</sup> / <sub>8</sub>	16,6	21	9	20	28	25
201214	12	G <sup>1</sup> / <sub>4</sub>	13,3	18	9	17	28	25
201212	12	G <sup>3</sup> / <sub>8</sub>	16,6	21	11	20	29	25



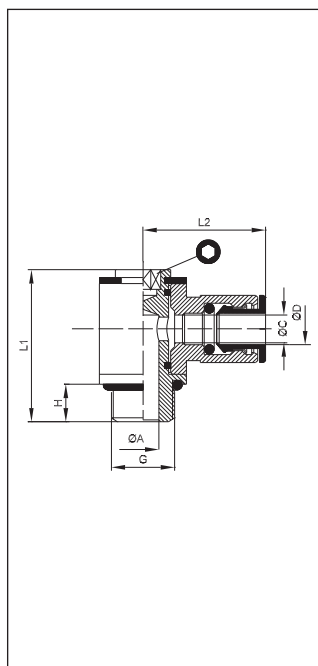
## vtso 014

### Prietokové oko obojstranné

Double banjo body

fluid division  
VT-HADICE & PLAST

VT	ØD	G	ØA	ØB	ØC	H	L	■
201301	4	M5	5	7	3	9	18	50
201302	4	G <sup>1</sup> / <sub>8</sub>	9,9	14	3	15	21	50
201303	5	M5	5	7	3,5	9	19	50
201304	5	G <sup>1</sup> / <sub>8</sub>	9,9	14	3,5	15	22,5	50
201305	6	G <sup>1</sup> / <sub>8</sub>	9,9	14	5	15	23	50
201306	6	G <sup>1</sup> / <sub>4</sub>	13,3	18	5	17	24	50
201307	8	G <sup>1</sup> / <sub>8</sub>	9,9	14	6	15	24,5	50
201308	8	G <sup>1</sup> / <sub>4</sub>	13,3	18	7	17	26	50
201309	8	G <sup>3</sup> / <sub>8</sub>	16,7	21	7	20	27	50
201310	10	G <sup>1</sup> / <sub>4</sub>	13,3	18	9	17	26	50
201311	10	G <sup>3</sup> / <sub>8</sub>	16,7	21	9	20	28	25
201312	12	G <sup>3</sup> / <sub>8</sub>	16,7	21	11	20	29	25

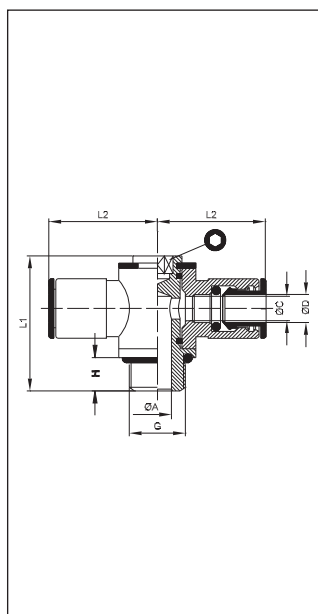


## vtso 015

### Otočná uhlová spojka (otočná aj pod tlakom) 360°

Complete single banjo (rotating under pressure) 360°

VT	ØD	G	ØA	ØC	H	L1	L2		
201415	3	M3	1,5	2	3	16	14	2	50
201416	3	M5	2	2	4	16,8	14	2	50
201401	4	M5	2	3	4	16,8	18	2	50
201402	4	G <sup>1/8</sup>	5,5	3	6	25	20,5	3	50
201403	5	M5	2	3,5	4	16,8	19	2	50
201404	5	G <sup>1/8</sup>	5,5	3,5	6	25	22,5	3	50
201405	6	G <sup>1/8</sup>	5,5	5	6	25	23	3	50
201406	8	G <sup>1/8</sup>	5,5	6	6	25	24,5	3	50
201407	6	G <sup>1/4</sup>	7,8	5	8	29,3	24	4	50
201408	8	G <sup>1/4</sup>	7,8	7	8	29,3	26	4	50
201409	10	G <sup>1/4</sup>	7,8	9	8	29,3	27	4	25
201410	8	G <sup>3/8</sup>	10	7	9	34	27	5	25
201411	10	G <sup>3/8</sup>	10	9	9	34	28	5	25
201414	12	G <sup>1/4</sup>	7,8	9	8	29,3	28	4	25
201412	12	G <sup>3/8</sup>	10	11	9	34	29	5	25

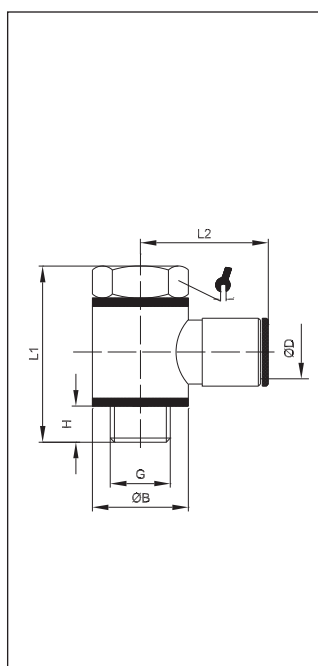


## vtso 016

### Otočná uhlová spojka obojstranná (otočná aj pod tlakom) 360°

Complete double banjo (rotating under pressure) 360°

VT	ØD	G	ØA	ØC	H	L1	L2		
201501	4	M5	2	3	4	16,8	18	2	50
201502	4	G <sup>1/8</sup>	5,5	3	6	25	21	3	50
201503	5	M5	2	3,5	4	16,8	19	2	50
201504	5	G <sup>1/8</sup>	5,5	3,5	6	25	22,5	3	50
201505	6	G <sup>1/8</sup>	5,5	5	6	25	23	3	50
201506	8	G <sup>1/8</sup>	5,5	6	6	25	24,5	3	50
201507	6	G <sup>1/4</sup>	7,8	5	8	29,3	24	4	50
201508	8	G <sup>1/4</sup>	7,8	7	8	29,3	27	4	50
201509	10	G <sup>1/4</sup>	7,8	9	8	29,3	26	4	25
201510	8	G <sup>3/8</sup>	10	7	9	34	27	5	25
201511	10	G <sup>3/8</sup>	10	9	9	34	28	5	25
201512	12	G <sup>3/8</sup>	10	11	9	34	29	5	25



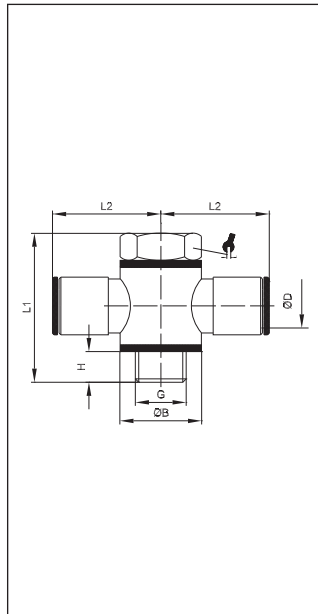
## vtso 017

### Otočná uhlová spojka

Complete single swivel banjo

fluid division  
VT-HADICE & PLAST

VT	ØD	G	ØB	H	L1	L2		
S11201	4	M5	SW9	3	17,5	18	8	50
S11215	4	M6	SW9	7	22	19	9	50
S11202	4	G <sup>1/8</sup>	14	5,5	28	20,5	14	50
S11203	5	M5	SW9	3	17,5	19	8	50
S11204	5	G <sup>1/8</sup>	14	5,5	28	22,5	14	50
S11213	6	M5	SW9	3	19,5	19,5	8	50
S11205	6	G <sup>1/8</sup>	14	5,5	28	23	14	50
S11206	6	G <sup>1/4</sup>	18	7	33	24	17	50
S11207	8	G <sup>1/8</sup>	14	5,5	28	24,5	14	25
S11208	8	G <sup>1/4</sup>	18	7	33	26	17	25
S11209	8	G <sup>3/8</sup>	21	7,5	36	27	19	25
S11210	10	G <sup>1/4</sup>	18	7	33	27	17	25
S11211	10	G <sup>3/8</sup>	21	7,5	36	28	19	25
S11214	12	G <sup>1/4</sup>	18	7,5	33	28	17	25
S11212	12	G <sup>3/8</sup>	21	7,5	36	29	19	10

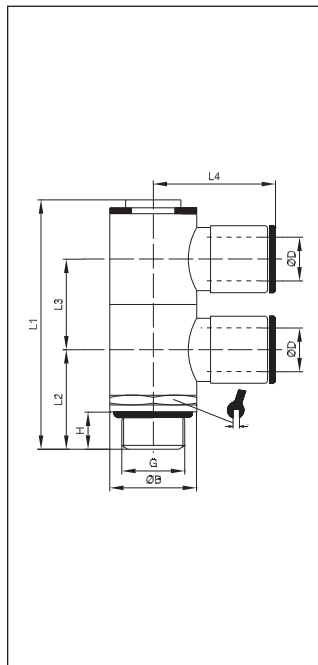


## vtso 018

### Otočná uhlová spojka obojstranná

Complete double swivel banjo

VT	ØD	G	ØB	H	L1	L2		
S11301	4	M5	7	3	17,5	18	8	50
S11302	4	G <sup>1</sup> / <sub>8</sub>	14	5,5	28	21	14	50
S11303	5	M5	7	3	17,5	19	8	50
S11304	5	G <sup>1</sup> / <sub>8</sub>	14	5,5	28	22,5	14	50
S11305	6	G <sup>1</sup> / <sub>8</sub>	14	5,5	28	23	14	50
S11306	6	G <sup>1</sup> / <sub>4</sub>	18	7	33	24	17	50
S11307	8	G <sup>1</sup> / <sub>8</sub>	14	5,5	28	24,5	14	25
S11308	8	G <sup>1</sup> / <sub>4</sub>	18	7	33	26	17	25
S11309	8	G <sup>3</sup> / <sub>8</sub>	21	7,5	37	27	22	25
S11310	10	G <sup>1</sup> / <sub>4</sub>	18	7	33	26	17	25
S11311	10	G <sup>3</sup> / <sub>8</sub>	21	7,5	36	28	19	25
S11312	12	G <sup>3</sup> / <sub>8</sub>	21	7,5	36	29	19	10

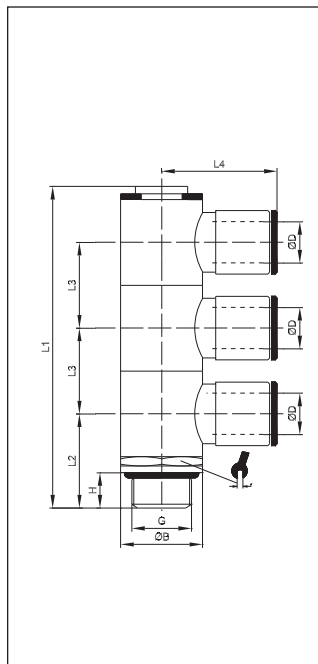


## vtso 036

### Dvojitá otočná spojka(otočná pod tlakom) 360°

Complete single banjo, doubled (rotating under pressure) 360°

VT	ØD	G	ØB	H	L1	L2	L3	L4		
210422	4	G <sup>1</sup> / <sub>8</sub>	13	6	44	19	15	20,5	14	25
201425	6	G <sup>1</sup> / <sub>8</sub>	13	6	44	19	15	23	14	25
201427	8	G <sup>1</sup> / <sub>8</sub>	13	6	44	19	15	24,5	14	25
201426	6	G <sup>1</sup> / <sub>4</sub>	17	8	50	22,5	17	24	17	25
201428	8	G <sup>1</sup> / <sub>4</sub>	17	8	50	22,5	17	26	17	10
201429	10	G <sup>1</sup> / <sub>4</sub>	17	8	50	22,5	17	27	17	10
201424	12	G <sup>1</sup> / <sub>4</sub>	17	8	50	22,5	17	28	17	10



## vtso 037

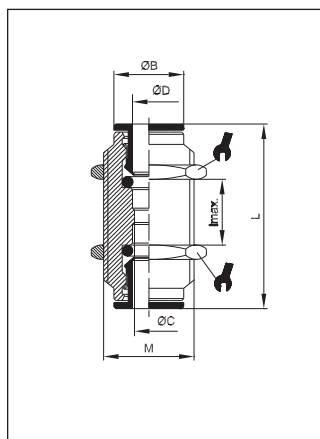
### Trojité otočná spojka(otočná pod tlakom) 360°

Complete single banjo, trebled (rotating under pressure) 360°

VT	ØD	G	ØB	H	L1	L2	L3	L4		
210432	4	G <sup>1</sup> / <sub>8</sub>	13	6	59	19	15	20,5	14	25
201435	6	G <sup>1</sup> / <sub>8</sub>	13	6	59	19	15	23	14	25
201437	8	G <sup>1</sup> / <sub>8</sub>	13	6	59	19	15	24,5	14	25
201436	6	G <sup>1</sup> / <sub>4</sub>	17	8	67	22	17	24	17	25
201438	8	G <sup>1</sup> / <sub>4</sub>	17	8	67	22	17	26	17	10
201439	10	G <sup>1</sup> / <sub>4</sub>	17	8	67	22	17	27	17	10
201434	12	G <sup>1</sup> / <sub>4</sub>	17	8	67	22	17	28	17	10

fluid division  
VT-HADICE & PLAST



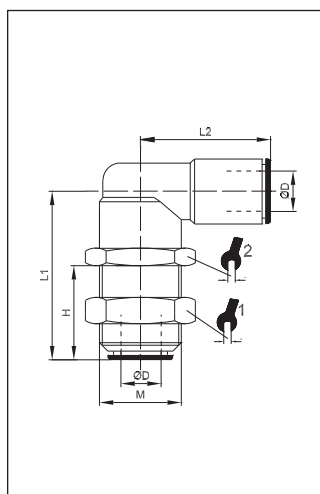


## vtso 010

### Panelová spojka

Bulkhead union

VT	ØD	ØC	M	ØB	$l_{max}$	L		
201101	4	3	M10x1	8	15	31,5	13	50
201102	5	4	M11x1	9,5	14	33	14	50
201103	6	5	M14x1	11	11	33,5	17	50
201104	8	7	M16x1	13	16	37	18	50
201105	10	9	M17x1	15	19	39,5	20	25
201106	12	11	M20x1	17	17	42	24	25
201107	14	13	M22x1	20	21	46	25	25

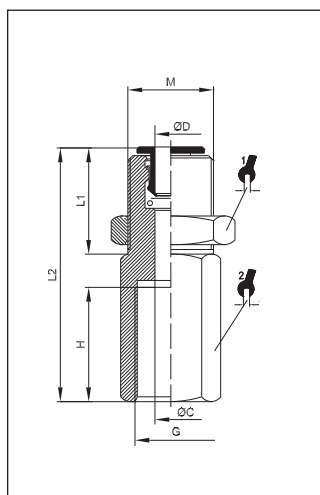


## vtso 064

### L - panelová spojka

Bulkhead union elbow

VT	ØD	M	H	L1	L2			
206401	4	M10x1	12,5	25,5	20	13	13	50
206403	6	M14x1	15	28	21	17	17	50
206404	8	M16x1	17	30,5	24	18	18	50
206405	10	M17x1	19	35	27	20	20	50

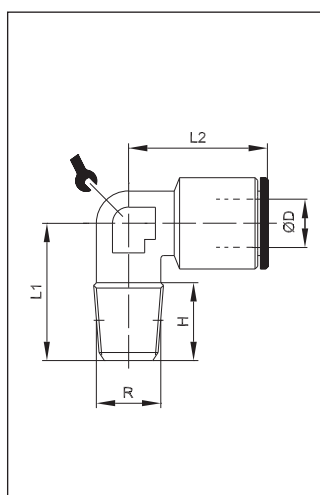


## vtso 025

### Priama spojka s vnútorným závitom (špeciál)

Manometer bulkhead connector

VT	ØD	G	ØC	M	H	L1	L2			
202502	4	G <sup>1</sup> / <sub>8</sub>	3	M10x1	6,5	15	25	13	15	50
202504	6	G <sup>1</sup> / <sub>8</sub>	5	M14x1	6,5	15	26,5	17	17	50
202505	6	G <sup>1</sup> / <sub>4</sub>	5	M14x1	10	15	31	17	17	50
202506	8	G <sup>1</sup> / <sub>8</sub>	7	M16x1	6,5	15	28,5	19	17	50
202507	8	G <sup>1</sup> / <sub>4</sub>	7	M16x1	10	15	33	19	17	50



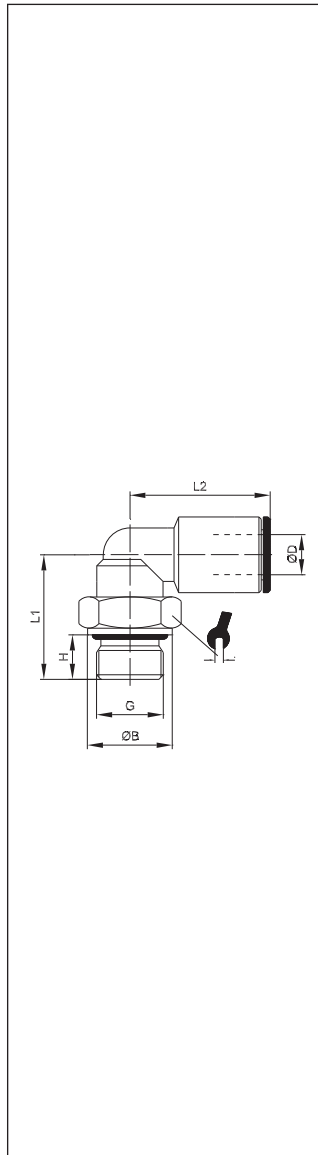
## vtso 019

### L - spojka šrúbovacia s kužel'ovým závitom

Threaded elbow adapter conical

fluid division  
VT-HADICE & PLAST

VT	ØD	R	H	L1	L2		
201901	4	R <sup>1</sup> / <sub>8</sub>	8	16,5	18,5	10	50
201902	5	R <sup>1</sup> / <sub>8</sub>	9	16,5	19	10	50
201903	6	R <sup>1</sup> / <sub>8</sub>	8	16,5	22,5	10	50
201904	6	R <sup>1</sup> / <sub>4</sub>	12	22	23,5	12	50
201905	8	R <sup>1</sup> / <sub>8</sub>	9	18,5	24	11	25
201906	8	R <sup>1</sup> / <sub>4</sub>	12	22	25	11	25
201907	10	R <sup>1</sup> / <sub>4</sub>	12	22	25	14	25

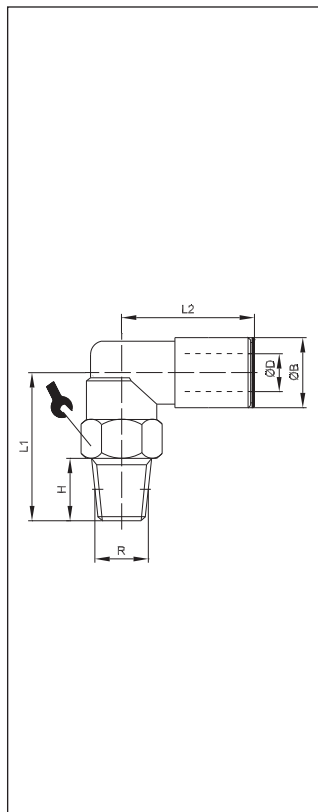


## vtso 022

### Otočná L- spojka so závitom

Rotary elbow male adaptor parallel

VT	ØD	G	ØB	H	L1	L2		
202200	4	M5	8	4	14,5	18	9	100
202219	4	M6	9	5	15,5	18	9	100
202216	4	M7	10	6	16,5	18	9	100
202201	4	G <sup>1</sup> / <sub>8</sub>	13	6	20	20	13	100
202202	4	G <sup>1</sup> / <sub>4</sub>	16	8	24	20	13	100
202227	5	M5	8	4	14,5	21	9	100
202228	5	G <sup>1</sup> / <sub>8</sub>	13	6	20	21	13	100
202230	5	G <sup>1</sup> / <sub>4</sub>	16	8	24	21	13	100
202215	6	M5	8	4	14,5	21	9	100
202225	6	M6	9	5	15,5	21	9	100
202217	6	M7	10	6	16,5	21	9	100
202218	6	M12x1,25	16	8	24	21	13	100
202222	6	M12x1,5	16	8	24	21	13	100
202203	6	G <sup>1</sup> / <sub>8</sub>	13	6	20	21	13	100
202204	6	G <sup>1</sup> / <sub>4</sub>	16	8	24	21	13	100
202205	8	G <sup>1</sup> / <sub>8</sub>	13	6	20	24	13	100
202206	8	G <sup>1</sup> / <sub>4</sub>	16	8	24	24	13	100
202207	8	G <sup>3</sup> / <sub>8</sub>	20	9	25,5	24	13	50
202208	10	G <sup>1</sup> / <sub>4</sub>	16	8	24	27	16	50
202209	10	G <sup>3</sup> / <sub>8</sub>	20	9	28	27	16	50
202224	10	G <sup>1</sup> / <sub>2</sub>	25	11	30	27	16	25
202210	12	G <sup>1</sup> / <sub>4</sub>	16	8	30,5	29	16	50
202211	12	G <sup>3</sup> / <sub>8</sub>	20	9	28,5	29	20	25
202212	12	G <sup>1</sup> / <sub>2</sub>	25	11	33,5	29	20	25
202213	14	G <sup>3</sup> / <sub>8</sub>	20	9	28,5	32	20	25
202214	14	G <sup>1</sup> / <sub>2</sub>	25	11	33,5	32	20	25



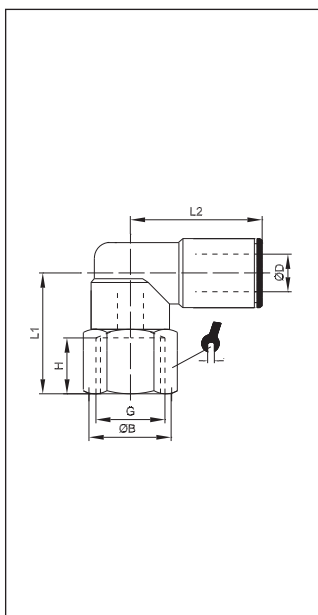
## vtso 022 keg.

### Otočná L- spojka s kuželovitým závitom

Rotary elbow male adaptor con.

fluid division  
VT-HADICE & PLAST

VT	ØD	R	H	L1	L2		
202251	4	R <sup>1</sup> / <sub>8</sub>	7	20	20	13	100
202252	4	R <sup>1</sup> / <sub>4</sub>	11	25	20	14	100
202253	6	R <sup>1</sup> / <sub>8</sub>	7	20	21	13	100
202254	6	R <sup>1</sup> / <sub>4</sub>	11	25	21	14	100
202255	8	R <sup>1</sup> / <sub>8</sub>	7	20	24	13	100
202256	8	R <sup>1</sup> / <sub>4</sub>	11	25	24	14	100
202257	8	R <sup>3</sup> / <sub>8</sub>	11	28	24	18	50
202258	10	R <sup>1</sup> / <sub>4</sub>	11	26	27	16	50
202259	10	R <sup>3</sup> / <sub>8</sub>	11	30	27	18	50
202260	12	R <sup>3</sup> / <sub>8</sub>	11	32,5	29	20	50
202261	12	R <sup>1</sup> / <sub>2</sub>	14	35,5	29	22	50
202262	14	R <sup>3</sup> / <sub>8</sub>	11	32,5	32	20	50
202263	14	R <sup>1</sup> / <sub>2</sub>	14	35,5	32	22	50

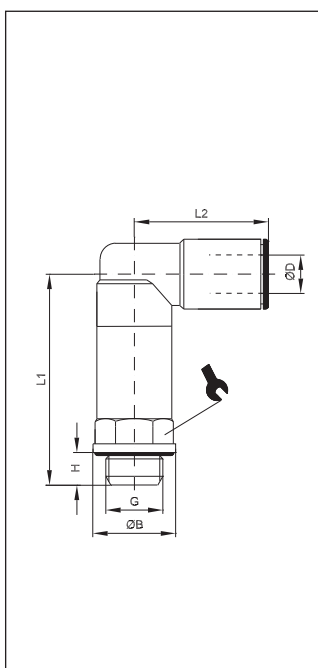


## vtso 022/F

### Otočná L- spojka s vnútorným závitom

Rotary elbow fitting, female

VT	ØD	G	ØB	H	L1	L2		
202801	4	G <sup>1</sup> / <sub>8</sub>	13	8	18	20	13	100
202802	4	G <sup>1</sup> / <sub>4</sub>	16	11	22	20	16	100
202803	6	G <sup>1</sup> / <sub>8</sub>	13	8	18	21	13	50
202804	6	G <sup>1</sup> / <sub>4</sub>	16	11	22	21	16	50
202805	8	G <sup>1</sup> / <sub>8</sub>	13	8	18	24	13	50
202806	8	G <sup>1</sup> / <sub>4</sub>	16	11	22	24	16	50

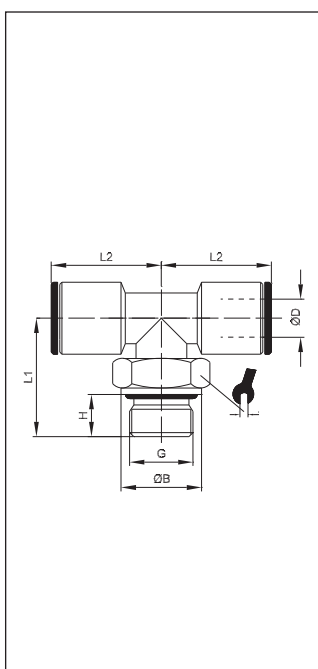


## vtso 026

### Otočná L- spojka, predĺžená

Rotary elbow male adaptor, long

VT	ØD	G	ØB	H	L1	L2		
202600	4	M5	8	4	23,5	18	9	25
202601	4	G <sup>1</sup> / <sub>8</sub>	12	6	33	20	13	25
202602	4	G <sup>1</sup> / <sub>4</sub>	16	8	38	20	13	25
202615	6	M5	8	4	23,5	21	9	25
202603	6	G <sup>1</sup> / <sub>8</sub>	13	6	33	21	13	25
202604	6	G <sup>1</sup> / <sub>4</sub>	16	8	38	21	13	25
202605	8	G <sup>1</sup> / <sub>8</sub>	13	6	33	24	13	10
202606	8	G <sup>1</sup> / <sub>4</sub>	16	8	38	24	13	10
202607	8	G <sup>3</sup> / <sub>8</sub>	20	7	34,5	21	20	10
202608	10	G <sup>1</sup> / <sub>4</sub>	16	6,5	37	23,5	16	10
202609	10	G <sup>3</sup> / <sub>8</sub>	20	7	38	23,5	20	10



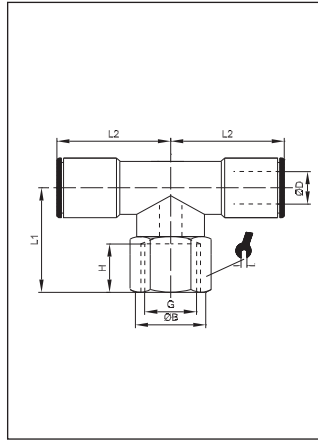
## vtso 020

### Otočná T- spojka so spodným závitom

Rotary tee parallel adaptor

fluid division  
VT-HADICE & PLAST

VT	ØD	G	ØB	H	L1	L2		
202000	4	M5	8	4	16,5	19	9	100
202001	4	G <sup>1</sup> / <sub>8</sub>	13	6	20	20	13	100
202002	4	G <sup>1</sup> / <sub>4</sub>	16	8	24	20	13	100
202003	6	G <sup>1</sup> / <sub>8</sub>	13	6	20	21,5	13	100
202004	6	G <sup>1</sup> / <sub>4</sub>	16	8	24	21,5	13	100
202005	8	G <sup>1</sup> / <sub>8</sub>	13	6	20	23,5	13	100
202006	8	G <sup>1</sup> / <sub>4</sub>	16	8	24	23,5	13	100
202007	8	G <sup>3</sup> / <sub>8</sub>	20	9	25,5	23,5	13	50
202008	10	G <sup>1</sup> / <sub>4</sub>	16	8	24	26,5	16	50
202009	10	G <sup>3</sup> / <sub>8</sub>	20	9	28	26,5	16	50
202010	12	G <sup>1</sup> / <sub>4</sub>	16	8	30,5	29	16	50
202011	12	G <sup>3</sup> / <sub>8</sub>	20	9	28,5	29	20	25
202012	14	G <sup>1</sup> / <sub>2</sub>	25	11	33,5	32	20	25
202016	14	G <sup>3</sup> / <sub>8</sub>	20	9	28,5	32	20	25

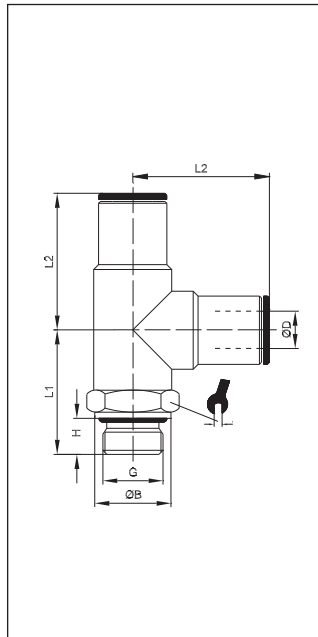


## vtso 020-F

### Otočná T - spojka s vnútorným závitom

Rotary t-fitting, female

VT	ØD	G	ØB	H	L1	L2		
202901	4	G <sup>1</sup> / <sub>8</sub>	12,8	8	18	20	13	100
202902	4	G <sup>1</sup> / <sub>4</sub>	15,8	11	22	20	16	100
202903	6	G <sup>1</sup> / <sub>8</sub>	12,8	8	18	21,5	13	50
202904	6	G <sup>1</sup> / <sub>4</sub>	15,8	11	22	21,5	16	50
202905	8	G <sup>1</sup> / <sub>8</sub>	12,8	8	18	23,5	13	50
202906	8	G <sup>1</sup> / <sub>4</sub>	15,8	11	22	23,5	16	50

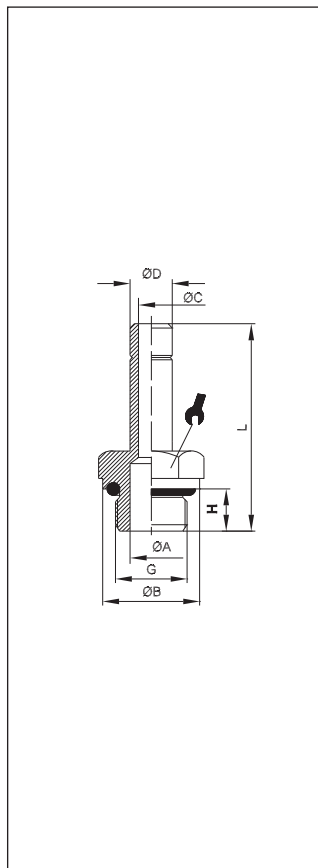


## vtso 021

### Otočná L - spojka s bočným závitom

Rotary parallel male L-adaptor

VT	ØD	G	ØB	H	L1	L2		
202100	4	M5	8	4	16,5	19	9	100
202101	4	G <sup>1</sup> / <sub>8</sub>	13	6	18,5	17,5	13	100
202102	4	G <sup>1</sup> / <sub>4</sub>	16	8	22,5	19	13	100
202103	6	G <sup>1</sup> / <sub>8</sub>	13	6	20	21	13	100
202104	6	G <sup>1</sup> / <sub>4</sub>	16	8	24	21	13	100
202105	8	G <sup>1</sup> / <sub>8</sub>	13	6	20	23	13	100
202106	8	G <sup>1</sup> / <sub>4</sub>	16	8	24	23	13	100
202107	8	G <sup>3</sup> / <sub>8</sub>	20	9	25,5	23	13	50
202108	10	G <sup>1</sup> / <sub>4</sub>	16	8	24	27	16	50
202109	10	G <sup>3</sup> / <sub>8</sub>	20	9	28	27	16	50
202110	12	G <sup>1</sup> / <sub>4</sub>	16	8	24,5	27	16	50
202111	12	G <sup>3</sup> / <sub>8</sub>	20	9	26,5	31	18	25
202112	14	G <sup>1</sup> / <sub>2</sub>	25	11	33,5	32	20	25



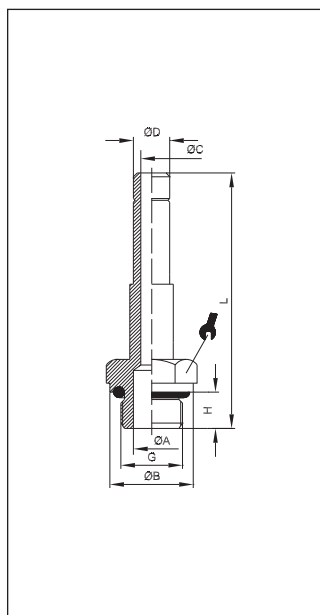
## vtso 06

### Priamy nadstavec s vonkajším závitom

Straight adaptor

fluid division  
VT-HADICE & PLAST

VT	ØD	G	ØB	ØC	ØA	H	L		
200601	4	M5	8	2	2	4	24,5	8	50
200621	4	M7	-	2	4	6	26	10	50
200602	4	G <sup>1</sup> / <sub>8</sub>	13	2	6	6	28	13	50
200603	4	G <sup>1</sup> / <sub>4</sub>	16	2	7,5	8	30	13	50
200604	5	M5	8	2,6	2,6	4	25	8	50
200605	5	G <sup>1</sup> / <sub>8</sub>	13	3	6	6	28,5	13	50
200606	5	G <sup>1</sup> / <sub>4</sub>	16	3	7,5	8	31	13	50
200600	6	M5	8	2,6	2,6	4	26	8	50
200622	6	M7	-	4	4	6	28	10	50
200607	6	G <sup>1</sup> / <sub>8</sub>	13	4	6	6	29,5	13	50
200608	6	G <sup>1</sup> / <sub>4</sub>	16	4	7,5	8	32	13	50
200609	8	G <sup>1</sup> / <sub>8</sub>	13	6	6	6	31	13	50
200610	8	G <sup>1</sup> / <sub>4</sub>	16	6	7,5	8	33,5	13	50
200611	8	G <sup>3</sup> / <sub>8</sub>	20	6	9	9	35,5	13	50
200618	10	G <sup>1</sup> / <sub>8</sub>	13	6	6	6	35,5	13	50
200612	10	G <sup>1</sup> / <sub>4</sub>	16	8	8	8	38	13	50
200613	10	G <sup>3</sup> / <sub>8</sub>	20	8	8	9	41	13	50
200620	12	G <sup>1</sup> / <sub>4</sub>	16	8	8	8	39	13	50
200614	12	G <sup>3</sup> / <sub>8</sub>	20	10	11	9	42	13	25
200615	12	G <sup>1</sup> / <sub>2</sub>	24	10	13	11	44	16	25
200616	14	G <sup>3</sup> / <sub>8</sub>	20	12	12	9	44,5	16	25
200617	14	G <sup>1</sup> / <sub>2</sub>	24	12	13	11	46,6	16	25

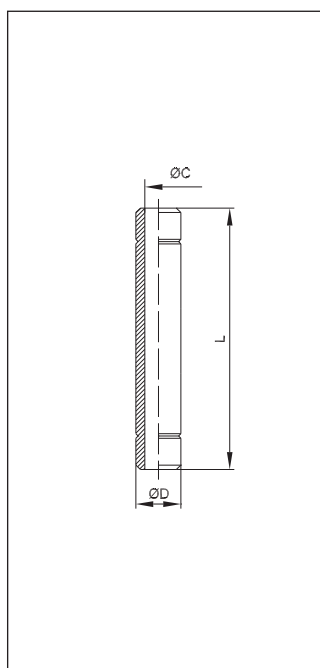


### vtso 060

#### Priamy nadstavec predĺžený

Adaptor parallel, long

VT	ØD	G	ØB	ØC	ØA	H	L		
206103	4	M7	-	2	4	6	38	10	50
206102	4	G <sup>1/8</sup>	13	2	6	6	39	13	50
206104	6	M7	-	4	4	6	42	10	50
206107	6	G <sup>1/8</sup>	13	4	6	6	43,5	13	50
206108	6	G <sup>1/4</sup>	16	4	7,5	8	46	14	50
206109	8	G <sup>1/8</sup>	13	6	6	6	47,5	13	50
206110	8	G <sup>1/4</sup>	16	6	7,5	8	49,5	14	50
206112	10	G <sup>1/4</sup>	16	8	8	8	55,5	14	50

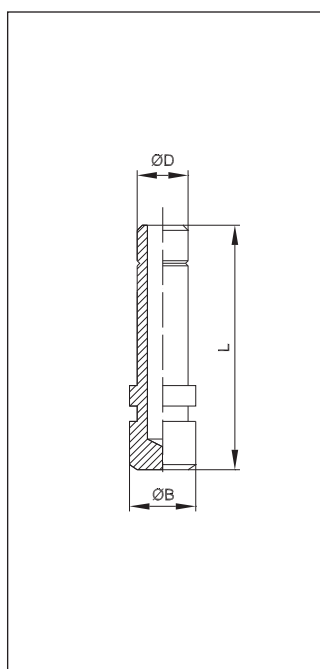


### vtso 07

#### Obojstranný priamy nadstavec

Double connector

VT	ØD	ØC	L	
200701	4	2	32	100
200702	5	3	33	50
200703	6	4	35	50
200704	8	6	38	50
200705	10	8	45,5	50
200706	12	10	48	50
200707	14	12	53	50



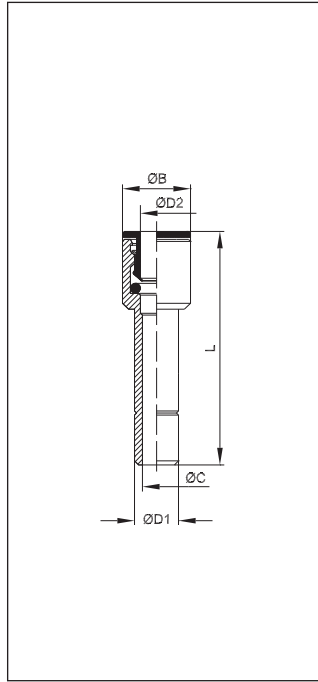
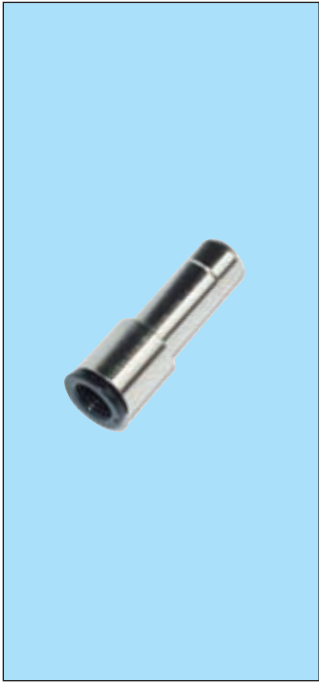
### vtso 09

#### Zátka

Plug

fluid division  
VT-HADICE & PLAST

VT	ØD	ØB	L	
201001	4	5	25,5	50
201002	5	6	26,5	50
201003	6	7	27,5	50
201004	8	9	30	50
201005	10	11	35	50
201006	12	13	37	25
201007	14	15	39,5	25

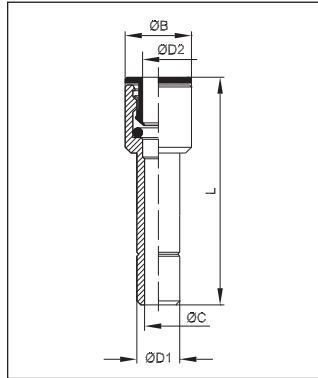


## vtso 08

### Redukcia

Reducer

VT	ØD1	ØD2	ØC	ØB	L	
200801	5	4	3	9	32,5	50
200802	6	4	3	9	29,5	50
200803	6	5	4	9,5	35,5	50
200804	8	4	3	9	31	50
200805	8	5	4	9,5	32,5	50
200806	8	6	5	10,5	32,5	50
200807	10	6	5	10,5	37	50
200808	10	8	7	13	38,5	50
200809	12	4	3	13	39,5	25
200810	12	6	5	13	40	25
200811	12	8	7	13	39	25
200817	12	10	9	15	41	25
200812	14	4	3	15	43	25
200813	14	6	5	15	43	25
200814	14	8	7	15	43,5	25
200815	14	10	9	15	43,5	25
200816	14	12	11	17	43,5	25

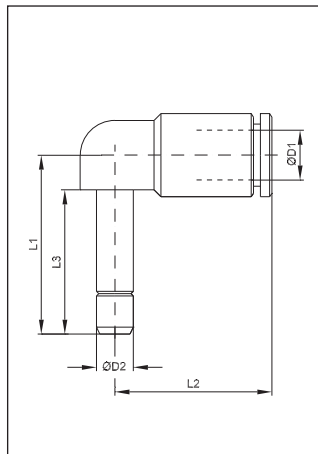


## vtso 08/E

### Predženie

Extension

VT	ØD1	ØD2	ØC	ØB	L	
200901	4	6	2	10,5	34	50
200902	6	8	4	13	38,5	50

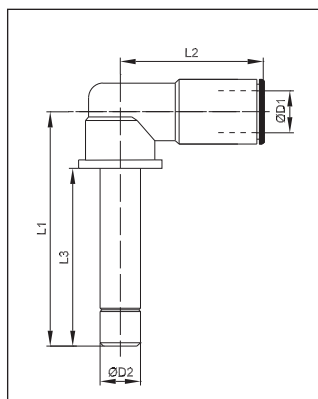


## vtso 047

### L - spojka s nadstavcom

Elbow connector

VT	ØD1	ØD2	L1	L2	L3	
204701	4	4	19,5	18	15,5	50
204703	6	6	26,5	20	18	50
204704	8	8	31	24	19,5	50
204705	10	10	41	25	24	25
204706	12	12	29	28	25	25
Redukovaná / reduced						
204707	4	6	29	20	18	25
204708	6	8	30,5	21	19,5	25

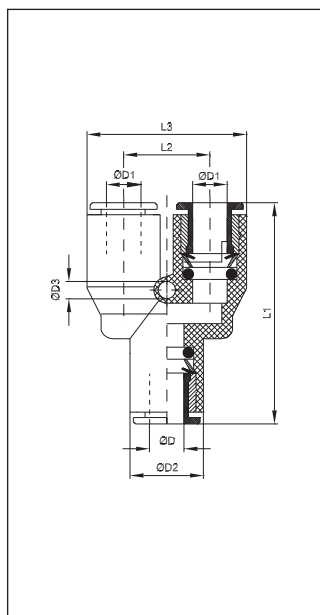


## vtso 047-L

### L - spojka s predžienym nadstavcom

Elbow connector, long

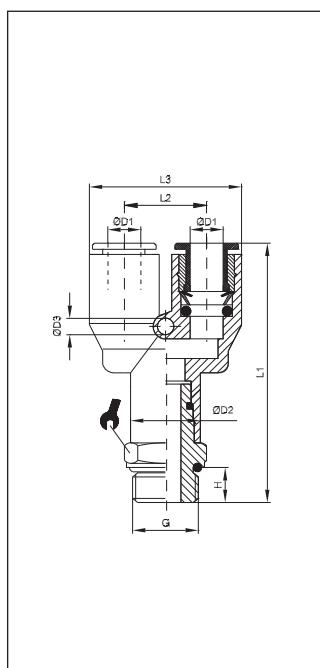
VT	ØD1	ØD2	L1	L2	L3	
204711	4	4	31,5	18	23	50
204713	6	6	43	21	32	50
204714	8	8	45	24	34	50
Redukovaná / reduced						
204717	4	6	43	20	32	25
204718	6	8	45	21	34	25



### vtso 023

Spojka Y plastová  
Y-connection, plastics

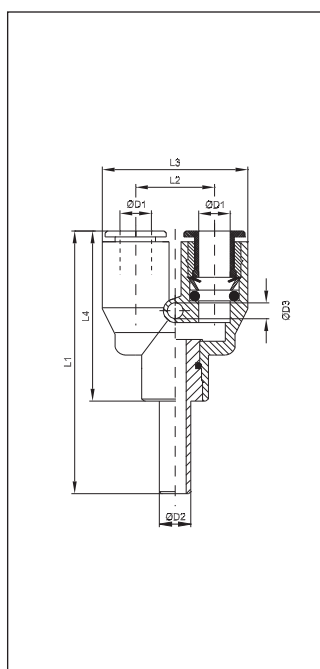
VT	ØD	ØD1	ØD2	ØD3	L1	L2	L3	■
202301	4	4	10,5	3,2	35	11	21,5	25
202303	6	6	12,5	3,2	36	13	25,5	25
202304	8	8	14,5	3,2	39	15	28,5	25
202305	10	10	17,5	4,4	49,5	18	36	10
202306	12	12	20,5	4,4	52,5	21,5	41	10
Redukovaná / reduced								
202307	6	4	12,5	3,2	38	11	21,5	25
202308	8	6	14,5	3,2	39	13	25,5	10
202309	10	8	17	3,2	41	15	29	10



### vtso 024

Spojka Y so závitom plastová  
Y-threaded connection, plastics

VT	ØD1	G	ØD2	ØD3	L1	L2	L3	H	■	■
202400	4	M5	10	2,7	34	11	20,5	4	9	25
202401	4	G <sup>1</sup> / <sub>8</sub>	10	2,7	34	11	20,5	5	13	25
202402	4	G <sup>1</sup> / <sub>4</sub>	10	2,7	36	11	20,5	6,5	16	25
202403	6	G <sup>1</sup> / <sub>8</sub>	12	3,2	41	13	25	5	13	25
202404	6	G <sup>1</sup> / <sub>4</sub>	12	3,2	43	13	25	6,5	16	25
202405	8	G <sup>1</sup> / <sub>8</sub>	14	3,2	43	15	29	5	14	25
202406	8	G <sup>1</sup> / <sub>4</sub>	15,5	3,2	47	15	30	6	17	10
202407	8	G <sup>3</sup> / <sub>8</sub>	14	3,2	47	15	29	7	20	10

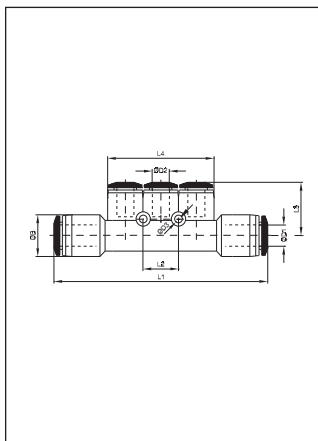


### vtso 034

Spojka Y s nastavcom plastová  
Y-connection, plastics

fluid division  
VT-HADICE & PLAST

VT	ØD1	ØD2	ØD3	L1	L2	L3	L4	■
203400	4	4	3,2	55	11	21,5	35	25
203403	6	6	3,2	57	13	25,5	36	10
203404	8	8	3,2	55	15	29	34	10
Redukovaná / reduced								
203401	4	6	2,7	43	11	20,5	25	25
203402	4	8	2,7	45	11	20,5	25	25

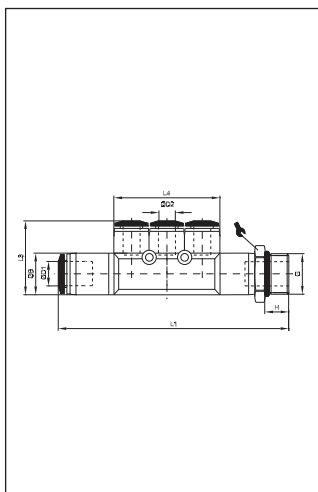


## vtso 062

### Rozdel'ovacia T - spojka

Multi-t-adaptor, plastics

VT	ØD1	ØD2	ØD3	ØB	L1	L2	L3	L4	
206201	6	4	3,2	12,5	61	11	26,5	33	50
206202	8	4	3,2	14,5	62,5	11	28	33	50
206203	8	6	3,2	14,5	67,5	13	30	39	25
206204	10	6	3,2	17	72	13	30,5	39	25
206205	10	8	3,2	17	77	15	32	45	25

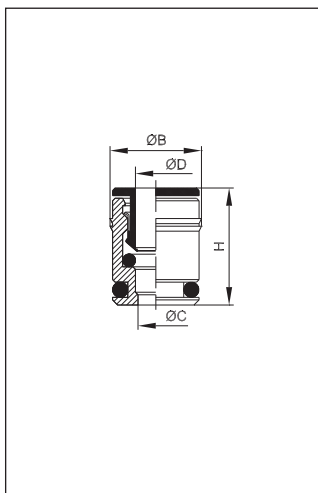


## vtso 063

### Otočná rozdel'ovacia T - spojka

Multi-t-adaptor (plastics), with parallel thread (brass)

VT	ØD1	ØD2	G	ØB	L1	L3	L4	H	
206301	6	4	G <sup>1</sup> / <sub>8</sub>	13	65,5	26,5	32,5	5,5	14
206302	8	4	G <sup>1</sup> / <sub>4</sub>	15	69,5	28	33	7	17
206303	8	6	G <sup>1</sup> / <sub>4</sub>	18	86,5	32	43	7	17
206304	10	8	G <sup>3</sup> / <sub>8</sub>	17	84	32	45	7,5	21

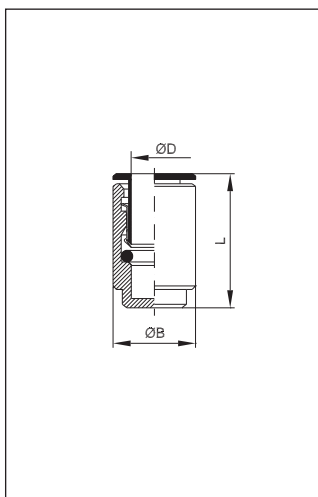


## vtso 027

### Vsuvka

Cartridge, blank

VT	ØD	ØC	ØB	H	
202701	4	2,9	9,2	14	100
202703	6	5	11,2	15	50
202704	8	7	13,2	17	50
202705	10	8	15,2	18,5	50



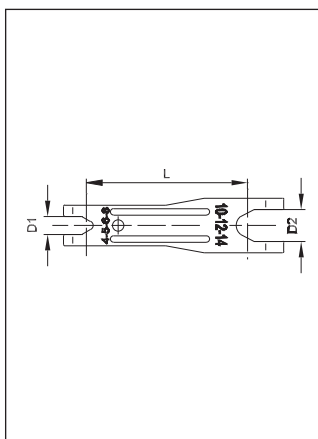
## vtso 044

### Zátka

Plug

VT	ØD	ØB	L	
204401	4	9	13,5	50
204403	6	11	15	50
204404	8	13	17,5	50
204405	10	15	18,5	50
204406	12	17	19,2	25

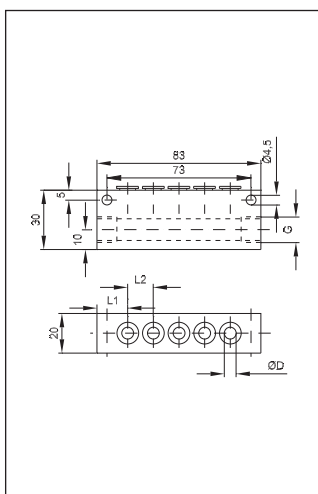




### Kľúč pre odpojenie

Disconnecting key

VT	ØD1	ØD2	L	
201701	8	14	93	10

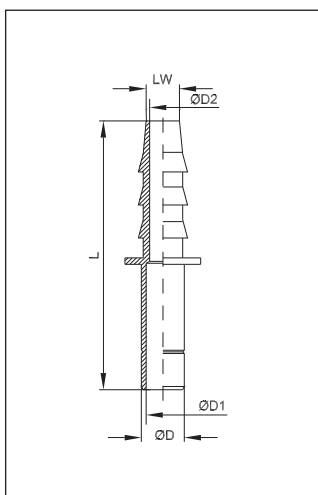


### vtso 038

Univerzálny rozdeľovač

Multi-adapter, aluminium

VT	ØD	G	L1	L2	N	
203801	4	G <sup>1</sup> / <sub>8</sub>	14	11	6	10
203802	6	G <sup>1</sup> / <sub>4</sub>	15,5	13	5	10
203803	8	G <sup>3</sup> / <sub>8</sub>	17,5	16	4	10

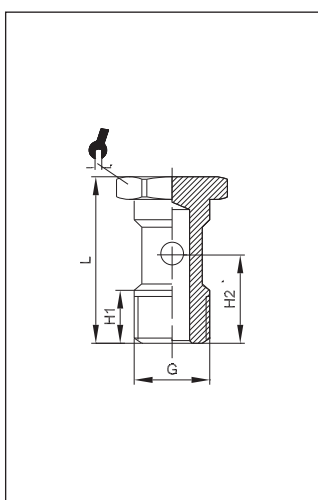


### vtso 070

Trúbková prechodka

Tube connector

VT	ØD	ØD1	ØD2	LW	L	
207006	6	4	4	6	36,5	50
207007	8	6	5	6	38	50
207008	8	6	6	8	43	50
207010	12	10	10	13	57	25
207012	14	12	11	13	60	25



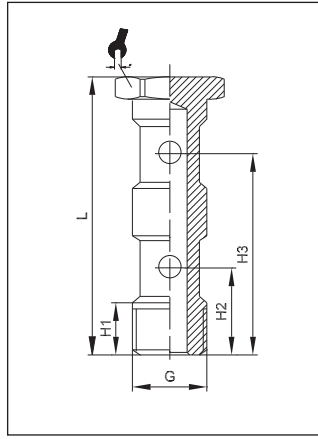
### 407

Prietoková skrutka

Single screw

fluid division  
VT-HADICE & PLAST



VT	G	H1	H2	L		
14101	M5	6	9,6	17,5	8	100
14106	M6	7,5	10,5	19	8	100
14102	G <sup>1</sup> / <sub>8</sub>	9	15	28	14	50
14403	G <sup>1</sup> / <sub>4</sub>	12	18	33	17	50
14404	G <sup>3</sup> / <sub>8</sub>	13	21	36	19	50
14405	G <sup>1</sup> / <sub>2</sub>	15	23,5	42	24	25

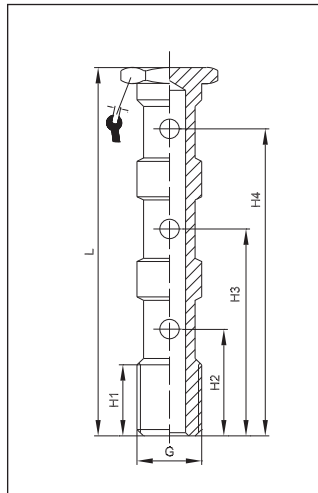


## 408

### Prietoková skrutka dvojité

Double screw



VT	G	H1	H2	H3	L		
14202	G <sup>1</sup> / <sub>8</sub>	9	15	31	44,5	14	50
14503	G <sup>1</sup> / <sub>4</sub>	11	17	36	51,5	17	50
14504	G <sup>3</sup> / <sub>8</sub>	14	20,5	43	58,1	19	50
14505	G <sup>1</sup> / <sub>2</sub>	15,5	23,5	49,5	68	24	25



## 415

### Prietoková skrutka trojitá

Triple screw

VT	G	H1	H2	H3	H4	L		
14301	G <sup>1</sup> / <sub>8</sub>	9	16	32,5	48	60	14	50
14703	G <sup>1</sup> / <sub>4</sub>	12	18,5	37	55,5	70,5	17	50
14303	G <sup>3</sup> / <sub>8</sub>	13	20,5	44	65	80	19	50
14705	G <sup>1</sup> / <sub>2</sub>	16	25	51	70,5	94	24	25

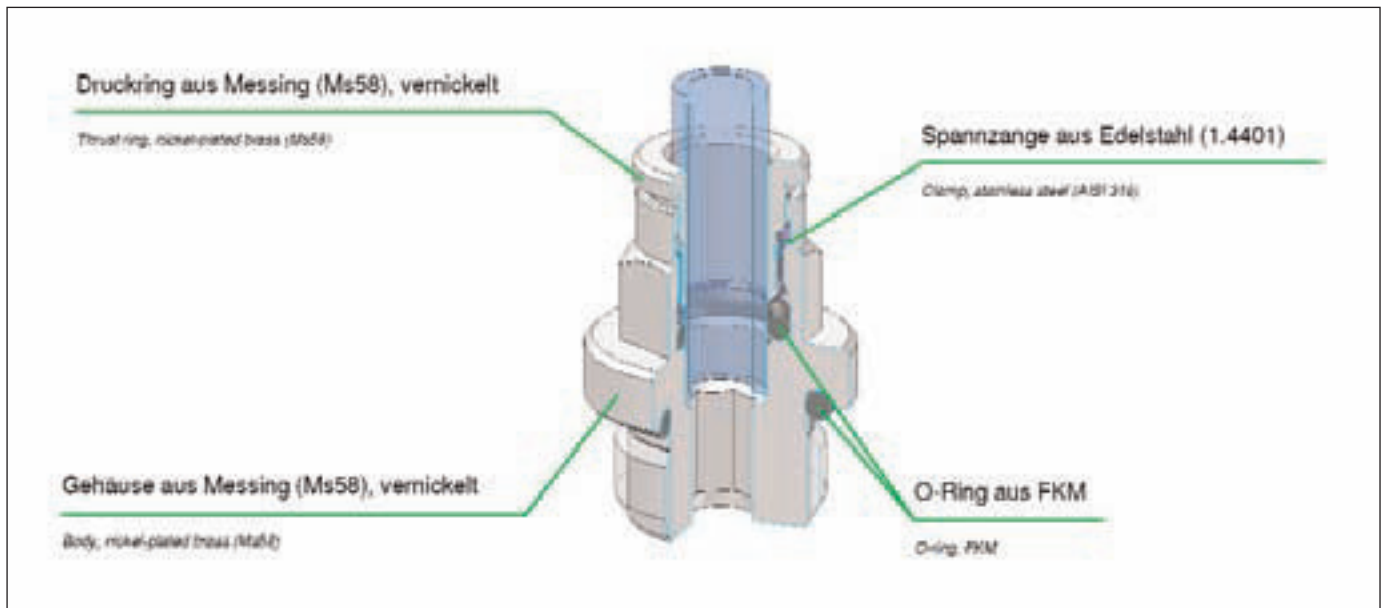
## vtso- FKM- Nástrčné koncovky

### vtso-FKM-Push-in fittings



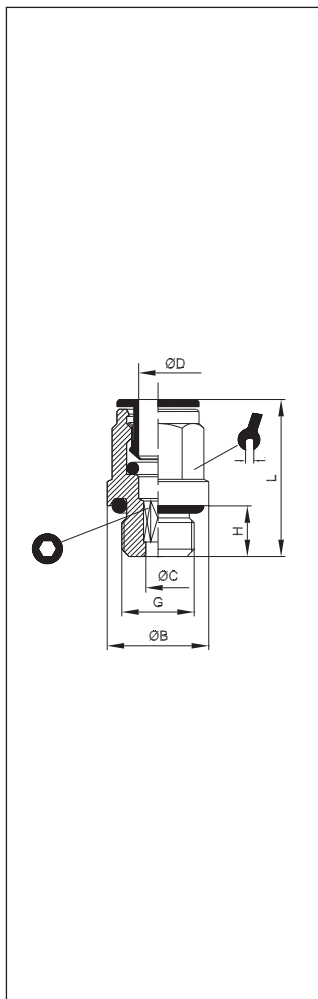
#### Funkcie

- ▶ **Nástrčný systém s nerezovou elastickou objímkou**
- ▶ **Montáž trúbky na jeden pohyb**
- ▶ **Pre trúbky z rôznych materiálov (PU, PA)**
- ▶ **Malé rozmery, nízka hmotnosť**
- ▶ **FKM O-krúžok re vysoké teploty**
- ▶ **O-Ring v tesniacom kanáliku - pre neopravené povrchy**
- ▶ **Šesťhranný koniec pre jednoduchú montáž**
- ▶ **Push-in system with stainless steel elastic clamp**
- ▶ **Tube assembly with one movement**
- ▶ **For tubes in various materials (PU, PA)**
- ▶ **Small-scale and low weight**
- ▶ **FKM O-rings for high temperatures**
- ▶ **O-ring in sealing channel - for raw surfaces**
- ▶ **Modular, flexible structure**
- ▶ **Hexagon socket for easy assembly**



## Technické údaje Technical data

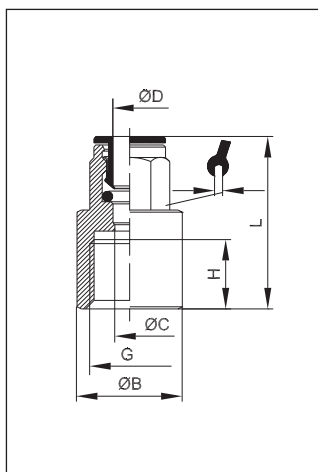
Pracovná teplota	-20°C až +150°C	Závisí od teplotných charakteristík trúbky
Pracovný tlak	až 16bar	Závisí od rozsahu tlaku trúbky
Vákuum	max 98%	
Materiály	Mosadzné telo (Ms58) pozinkované Bez silikonové NBR tesnenie Nerezové svorky 1.4401 Druckring aus Messing (Ms58) vernickelt	
Závit	Valcový závit DIN EN ISO 228 Kužeľový závit DIN EN 10226 (DIN 2999) Metrický závit DIN ISO 261	Valcový s O krúžkom
Médium	Mazací a nemazací stlačený vzduch	Médium, ktoré je kompatibilné s materiálom komponentov
Hadica	Pre trubky podľa normy ISO 14743 Tolerancia pre vonkaj šie-Ø 4 až 8: ± 0,1 Tolerancia pre vonkaj šie-Ø 10 až 14: ± 0,15 (PU) 10 až 14: ± 0,1 (PA)	Odporúčané materiály: PU, PA
Operating temperature	-20°C to +70°C	Dependent on the tube's temperature characteristics
Operating pressure	Up to 16bar	Dependent on the pressure range of the tube used
Vacuum	max 98%	
Materials	Brass housing (Ms58), nickel-plated Silicon-free NBR seals Stainless steel clamp 1.4401 Brass thrust ring (Ms58), nickel-plated	
Thread	Cyl. thread, DIN EN ISO 228 Con. thread, DIN EN 10226 (DIN 2999) Metr. thread, DIN ISO 261	Cylindrical with O-ring seal
Medium	Lubricated and non-lubricated compressed air	Mediums which are compatible with the component materials
Tubes	For tubes in line with ISO 14743 Tolerances for external Ø 4 to 8: ±0.1 Tolerances for external Ø 10 to 14: ±0.15 (PU) 10 to 14: ±0.1 (PA)	Recommended materials: PU, PA



### vtso 01-FKM

**Priama spojka s vonkajším závitom**  
Straight male adaptor (parallel)

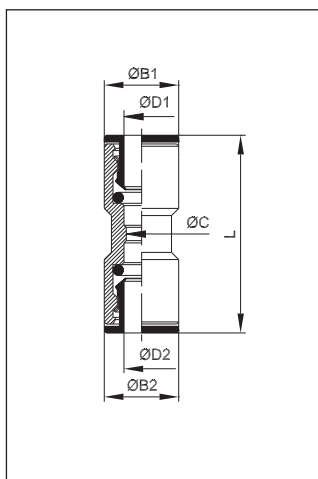
VT	ØD	G	ØB	ØC	H	L			
v200101	4	M5	9	2,6	4	20,5	Ø9	2,5	50
v200102	4	G <sup>1</sup> / <sub>8</sub>	13,5	2,6	6	20	9	2,5	50
v200103	4	G <sup>1</sup> / <sub>4</sub>	17	2,6	8	21	9	2,5	50
v200100	6	M5	10,5	2,6	4	22,5	Ø10,5	2,5	50
v200107	6	G <sup>1</sup> / <sub>8</sub>	13,5	4,2	6	24	11	4	50
v200108	6	G <sup>1</sup> / <sub>4</sub>	17	4,2	8	24	11	4	50
v200109	8	G <sup>1</sup> / <sub>8</sub>	12,8	5,2	6	26,5	13	5	50
v200110	8	G <sup>1</sup> / <sub>4</sub>	17	6,2	8	25	13	6	50
v200111	8	G <sup>3</sup> / <sub>8</sub>	20	6,2	9	25	13	6	50
v200112	10	G <sup>1</sup> / <sub>4</sub>	16	7,3	8	29	16	7	50
v200113	10	G <sup>3</sup> / <sub>8</sub>	21	8,3	9	29,5	16	8	50



### vtso 02-FKM

**Priama spojka s vnútorným závitom**  
Straight female adaptor

VT	ØD	G	ØB	ØC	H	L			
v200201	4	G <sup>1</sup> / <sub>8</sub>	12	3	6,5	26,5	9		50
v200205	6	G <sup>1</sup> / <sub>8</sub>	12	5	6,5	27	11		50
v200206	6	G <sup>1</sup> / <sub>4</sub>	17	5	10	31	11		50
v200207	8	G <sup>1</sup> / <sub>8</sub>	12	7	6,5	28	13		50
v200208	8	G <sup>1</sup> / <sub>4</sub>	17	7	10	32	13		50

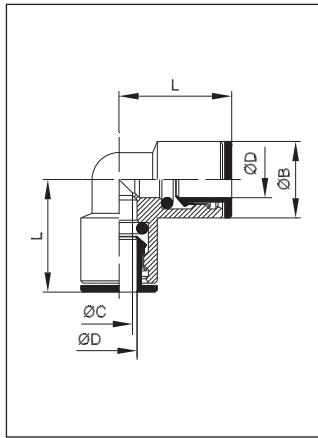


### vtso 03-FKM

**Priama spojka**  
Straight connector

fluid division  
**VT-HADICE & PLAST**

VT	ØD1	ØD2	ØB1	ØB2	ØC	L			
v200301	4	4	9	9	3	31			50
v200303	6	6	11	11	5	33			50
v200304	8	8	13	13	7	37			50
v200305	10	10	15	15	9	39			50

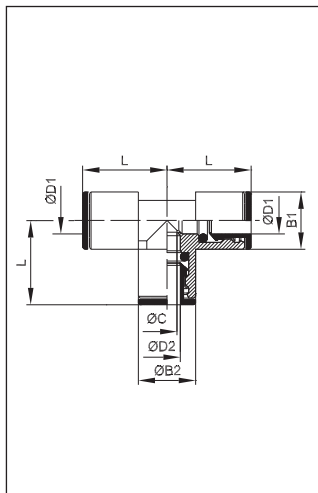


## vtso 04-FKM

### L - spojka

Elbow connector

VT	ØD	ØB	ØC	L	
v200401	4	9	3	17,5	50
v200403	6	11	5	20	50
v200404	8	13	7	23	50
v200405	10	15	8	25	50

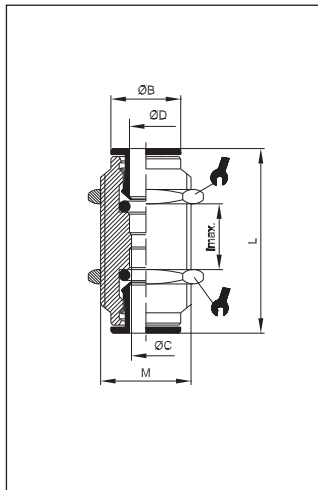


## vtso 05-FKM

### T-spojka

T-connector

VT	ØD1	ØD2	ØB1	ØB2	ØC	L	
v200501	4	4	9	9	3	17	50
v200503	6	6	11	11	5	19,5	50
v200504	8	8	13	13	7	23	50
v200505	10	10	15	15	8	25	20

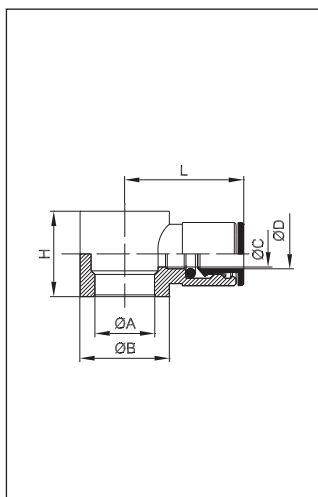


## vtso 010-FKM

### Panelová spojka

Bulkhead union

VT	ØD	M	ØB	ØC	$I_{max}$	L		
v201101	4	M10x1	8	3	15	31,5	13	50
v201103	6	M14x1	11	5	11	33,5	17	50
v201104	8	M16x1	13	7	16	37	18	50
v201105	10	M17x1	15	9	19	39,5	20	25



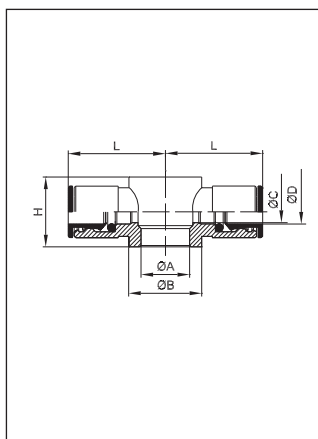
## vtso 013-FKM

### Prietokové oko

Single banjo body

fluid division  
VT-HADICE & PLAST

VT	ØD	G	ØA	ØB	ØC	H	L	
v201201	4	M5	5	SW9	3	9	18	50
v201202	4	G <sup>1</sup> / <sub>8</sub>	9,9	14	3	15	20,5	50
v201205	6	G <sup>1</sup> / <sub>8</sub>	9,9	14	5	15	23	50
v201206	6	G <sup>1</sup> / <sub>4</sub>	13,3	18	5	17	24	50
v201207	8	G <sup>1</sup> / <sub>8</sub>	9,9	14	6	15	24,5	50
v201208	8	G <sup>1</sup> / <sub>4</sub>	13,3	18	7	17	26	50
v201210	10	G <sup>1</sup> / <sub>4</sub>	13,3	18	9	17	27	50
v201211	10	G <sup>3</sup> / <sub>8</sub>	16,6	21	9	20	28	25

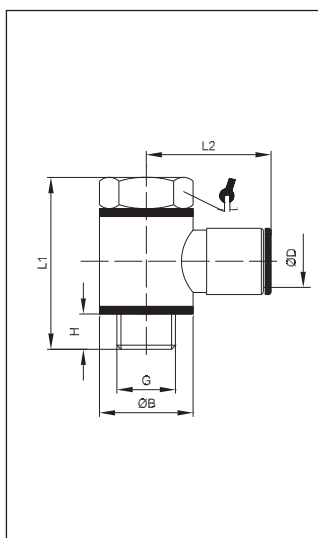


## vtso 014-FKM

### Prietokové oko dvojstranné

Double banjo body

VT	ØD	G	ØA	ØB	ØC	H	L	
v201302	4	G <sup>1</sup> / <sub>8</sub>	9,9	14	3	15	21	50
v201305	6	G <sup>1</sup> / <sub>8</sub>	9,9	14	5	15	23	50
v201306	6	G <sup>1</sup> / <sub>4</sub>	13,3	18	5	17	24	50

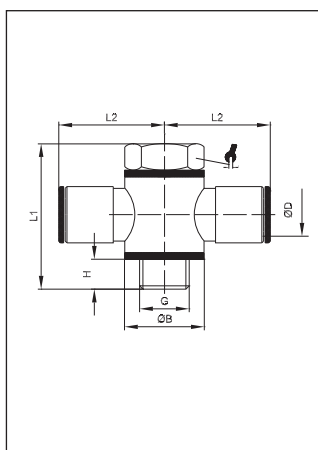


## vtso 017-FKM

### Uhlová spojka

Complete single swivel banjo

VT	ØD	G	ØB	H	L1	L2		
v11201	4	M5	SW9	3	17,5	18,5	8	50
v11202	4	G <sup>1</sup> / <sub>8</sub>	14	5,5	28	21	14	50
v11203	5	M5	SW9	3	17,5	19,5	8	50
v11213	6	M5	SW9	3	17,5	19	8	50
v11205	6	G <sup>1</sup> / <sub>8</sub>	14	5,5	28	22,5	14	50
v11206	6	G <sup>1</sup> / <sub>4</sub>	18	7	33	24	17	50
v11207	8	G <sup>1</sup> / <sub>8</sub>	14	5,5	28	24,5	14	25
v11208	8	G <sup>1</sup> / <sub>4</sub>	18	7	33	26	17	25
v11209	8	G <sup>3</sup> / <sub>8</sub>	21	7,5	36	28	19	25
v11210	10	G <sup>1</sup> / <sub>4</sub>	18	7	33	27	17	25
v11212	12	G <sup>3</sup> / <sub>8</sub>	21	7,5	36	30	19	10

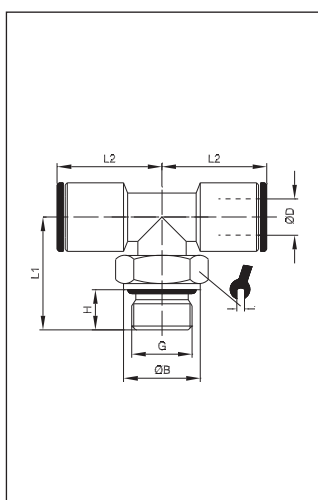


## vtso 018-FKM

### Uhlová spojka obojstranná

Complete double swivel banjo

VT	ØD	G	ØB	H	L1	L2		
v11302	4	G <sup>1</sup> / <sub>8</sub>	14	5,5	28	21	14	50
v11305	6	G <sup>1</sup> / <sub>8</sub>	14	5,5	28	22,5	14	50
v11306	6	G <sup>1</sup> / <sub>4</sub>	18	7	33	24	17	50



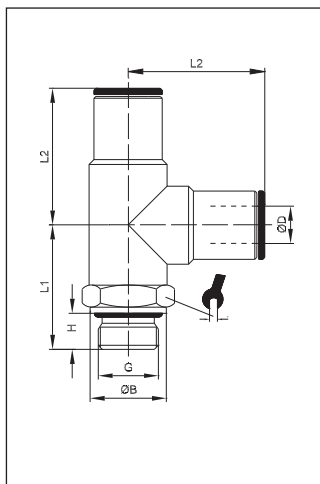
## vtso 020-FKM

### Otočná T - spojka so spodným závitom

Rotary tee parallel adaptor

fluid division  
VT-HADICE & PLAST

VT	ØD	G	ØB	H	L1	L2		
v202001	4	G <sup>1</sup> / <sub>8</sub>	13	6	20	20	13	100
v202003	6	G <sup>1</sup> / <sub>8</sub>	13	6	20	21,5	13	100
v202005	8	G <sup>1</sup> / <sub>8</sub>	13	6	20	23,5	13	100
v202006	8	G <sup>1</sup> / <sub>4</sub>	16	8	24	23,5	13	100
v202008	10	G <sup>1</sup> / <sub>4</sub>	16	8	24	26,5	16	50

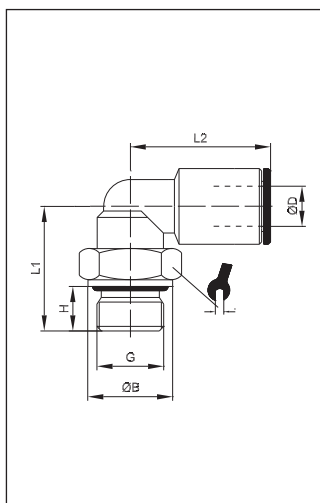


## vtso 021-FKM

### Otočná T - spojka s bočným závitom

Rotary parallel male T-adaptor

VT	ØD	G	ØB	H	L1	L2		
v202101	4	G <sup>1</sup> / <sub>8</sub>	13	6	18,5	17,5	13	100
v202103	6	G <sup>1</sup> / <sub>8</sub>	13	6	20	21	13	100
v202104	6	G <sup>1</sup> / <sub>4</sub>	16	8	24	21	16	100
v202105	8	G <sup>1</sup> / <sub>8</sub>	13	6	20	23	13	100
v202106	8	G <sup>1</sup> / <sub>4</sub>	16	8	24	23	16	100
v202108	10	G <sup>1</sup> / <sub>4</sub>	16	8	24	27	16	50



## vtso 022-FKM

### Otočná L - spojka so závitom

Rotary elbow male adaptor parallel

VT	ØD	G	ØB	H	L1	L2		
v202200	4	M5	8	4	14,5	18	9	100
v202201	4	G <sup>1</sup> / <sub>8</sub>	13	6	20	20	13	100
v202203	6	G <sup>1</sup> / <sub>8</sub>	13	6	20	21	13	100
v202204	6	G <sup>1</sup> / <sub>4</sub>	16	8	24	21	13	100
v202205	8	G <sup>1</sup> / <sub>8</sub>	13	6	20	24	13	100
v202206	8	G <sup>1</sup> / <sub>4</sub>	16	8	24	24	13	100
v202207	8	G <sup>3</sup> / <sub>8</sub>	20	9	25,5	24	13	50
v202208	10	G <sup>1</sup> / <sub>4</sub>	16	8	24	27	16	50
v202209	10	G <sup>3</sup> / <sub>8</sub>	20	9	28	27	16	50